



The world's *smartest* heating system

TherMiser TME 3E

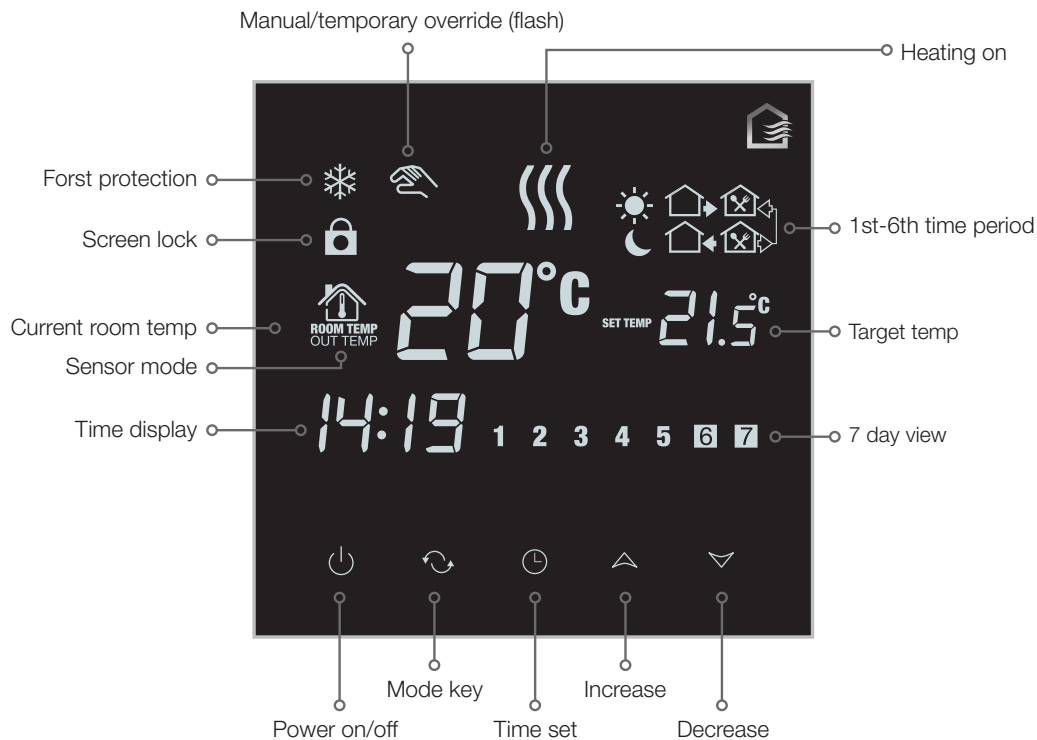
Programmable Touch Screen Thermostat



Using the TherMiser TME 3E

Instructions on how to set and use your newly purchased TherMiser TME 3E unit.
The following pages will help guide you through the process.

Basic functions and display



Factory default settings

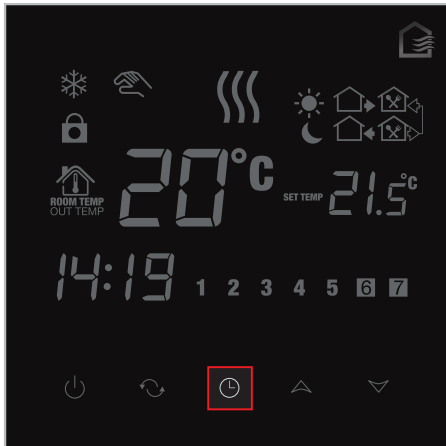
PERIOD		SYMBOL	DEFAULT PERIOD TIME	DEFAULT PERIOD TEMPERATURE
Working/week days Mon - Fri 1,2,3,4,5	1st		06:30 Good morning	22°C
	2nd		09:00 Leave for school/work	15°C
	3rd		12:00 Return for lunch	15°C
	4th		14:00 Go back out	15°C
	5th		17:00 Welcome home	22°C
	6th		23:00 Good night	15°C
Weekend Sat - Sun 6,7	1st		06.30	22°C
	2nd		23:00	15°C

Note: to add additional time/temperature periods to days 6 & 7 please see 1.2 b&c to create a 6 or 7 day “working week”, each day having 6 time/temp settings.

TherMiser TME operation

1. Time and time interval setting

1.1 SETTING THE TIME (FACTORY DEFAULT (00:00))

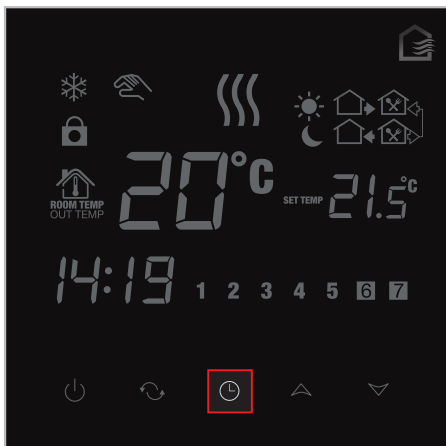


Press the time key to scroll between hour/minute/day of the week.

In each mode press the or to adjust the time (24hr) & day (1-7). Note: Mon = 1, Sun = 7.

The time and day will now be set.

1.2 TIME INTERVAL AND TEMPERATURE AUTO CONTROL SETTINGS



Press and hold for 5 seconds; screen displays 'loop' (programming mode) then:

A. press screen displays "12345"

B. (up) Once Screen displays "123456"



NOTE: In any of the above modes press to select the time interval setting and target temperature; see 1.3.

C. (up) twice Screen displays "1234567"

TherMiser TME operation

1. Time and time interval setting

1.3 SETTING THE ON/OFF TIME AND TEMPERATURE



Press again to enter the 1st time period/temperature setting (Good morning) factory default is (06:30 and 22°C).



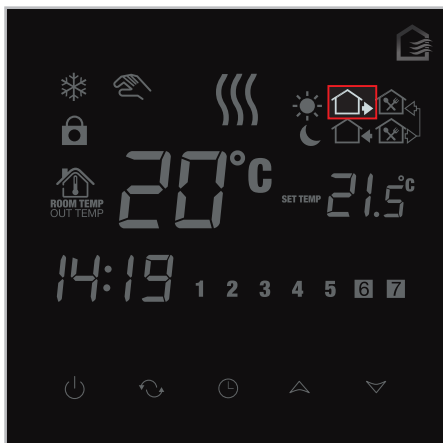
Press again and the ON time hour starts flashing (default: 06:30), press or to adjust the hour.



Press again and the ON time minute starts flashing (default: 06:30), press or to adjust the min.



Press again and the target temp starts flashing (default: 22°C), press or to set target temp.



Press again to enter into the 2nd time period/temperature setting (leave for school/work) repeat the steps above to set.

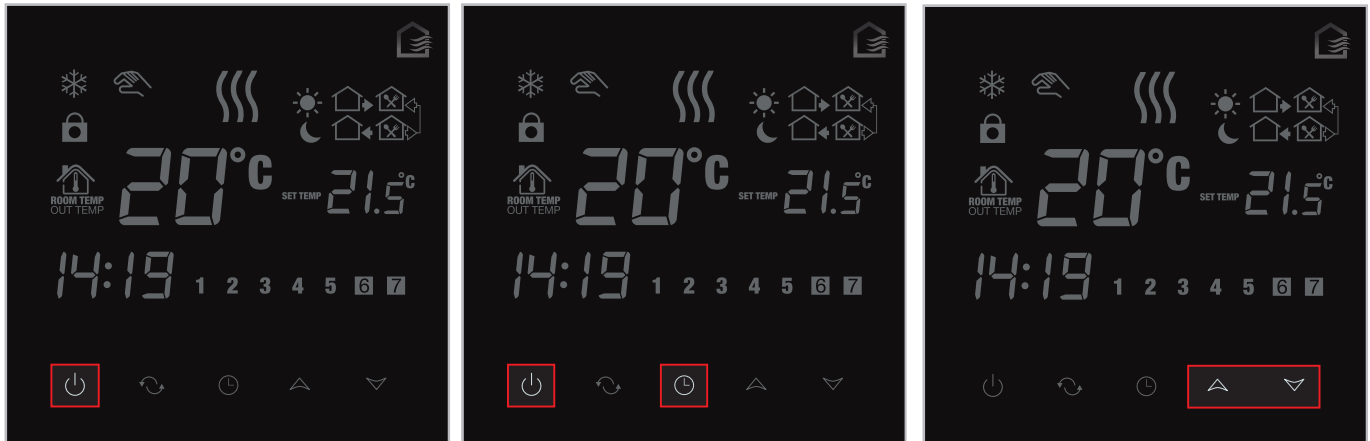


Press again to enter into 3rd time period/temperature setting and repeat as above.

TherMiser TME operation

2. Advanced settings

2.1 ENTERING INTO ADVANCED SETTINGS MENU*



Press so that the screen is off.

To adjust the settings press or .

To move through menu items 1-7 press the .

Then press and hold + together. The unit enters the menu at Status 1: "SEN" and in Function 00 (flashing).

See the menu below

MENU NO.	ICON	FUNCTION	OPTIONS	FACTORY SETTING
1	SEN	Controls sensor inputs	00: Built-in temp sensor only 01: External temp sensor only 02: Built in temp and External Skirting Temp Sensor Note: If no external sensor fitted, "ERR" message displays, unit will not function	00
2	OSV	Upper limit of external/ThermaSkirt sensing temp,	5~99°C	42°C
3	DIF	Differential hysteresis between off and on again of external temp.	1~9°C	2°C
4	SFH	Room temperature upper limit	5~99°C	35°C
5	SVL	Room temperature lower limit	5~99°C	5°C
6	ADJ	Calibrates tem of unit to the room, compensating for external factors.	-5~+5°	0°C
7	FRE	Frost protection	00: Frost protection OFF 01: Frost protection ON. 5°C	00
8	PON	Power on memory	00: Auto memory, no power 01: NO power = no memory	00
9	FAC	Factory reset	Adjust using until "00" then press to restore factory settings	00

2.2 LOCK SCREEN/MENU

To prevent tampering and adjustment of the TherMiser unit, unit, press for 5 seconds appears. To unlock, press for 5 seconds flashes then disappears.

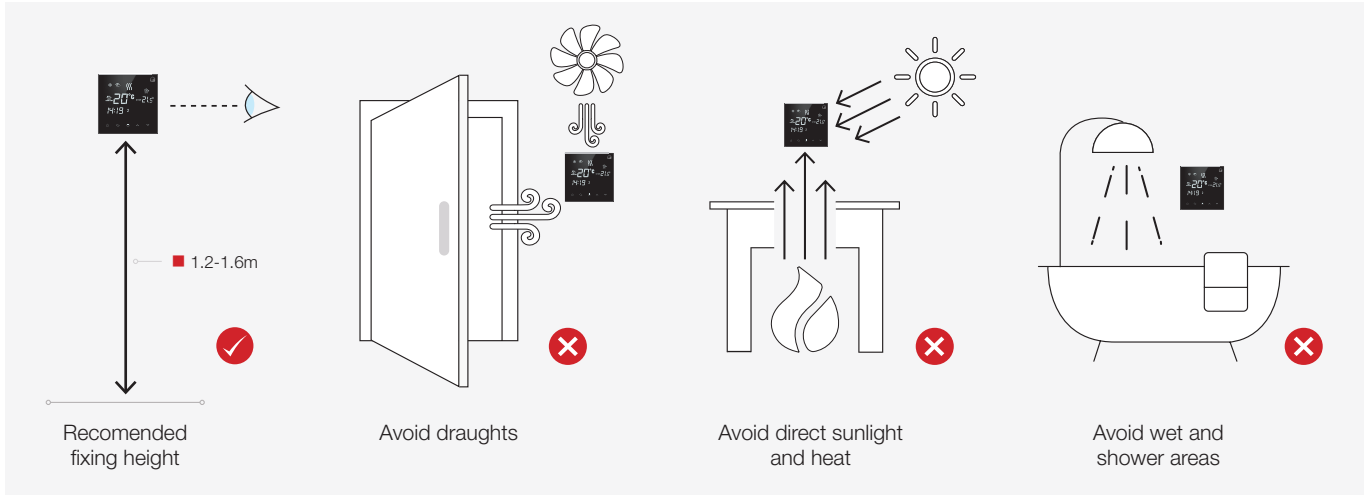
2.3 LOCK SCREEN/MENU

Manual Override . Press or to override current target temp. appears and if heat required. Automatically resets to program mode at next time interval.

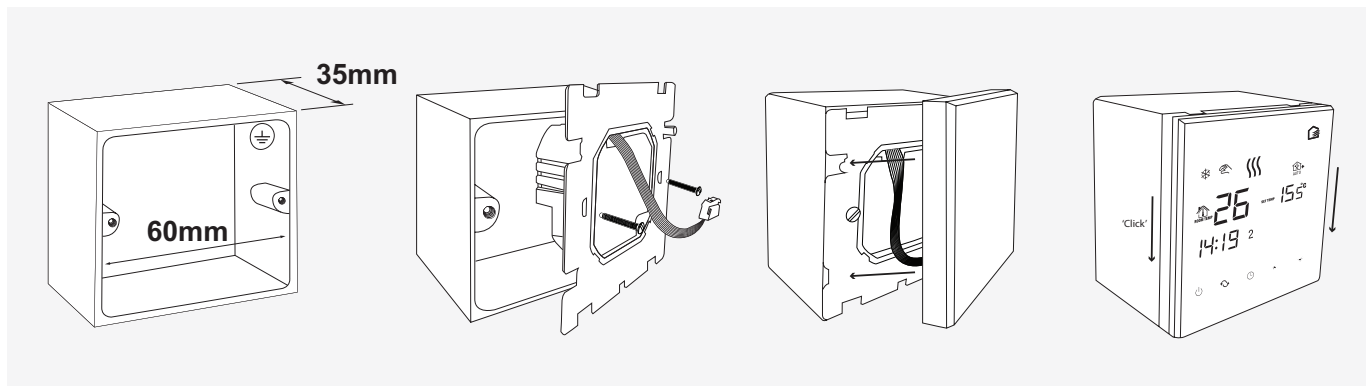
* These are advanced settings and should be adjusted with caution.

TherMiser TME installation

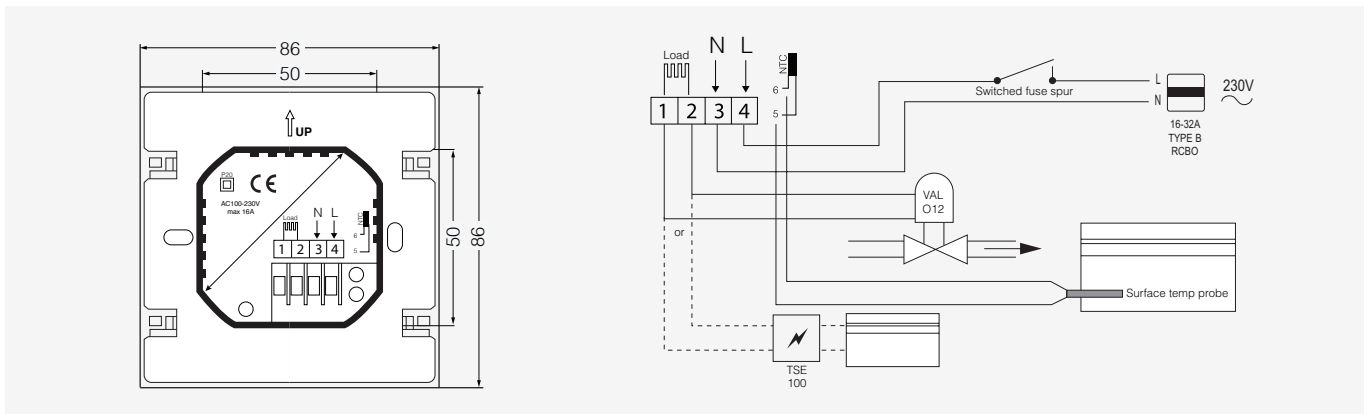
Installation



Mounting the TherMiser



Wiring the TherMiser





DiscreteHeat Company Limited

1 Victoria Works Industrial Estate,
Atherton, Manchester, M46 0FY.

www.discreteheat.com

0845 123 8367

