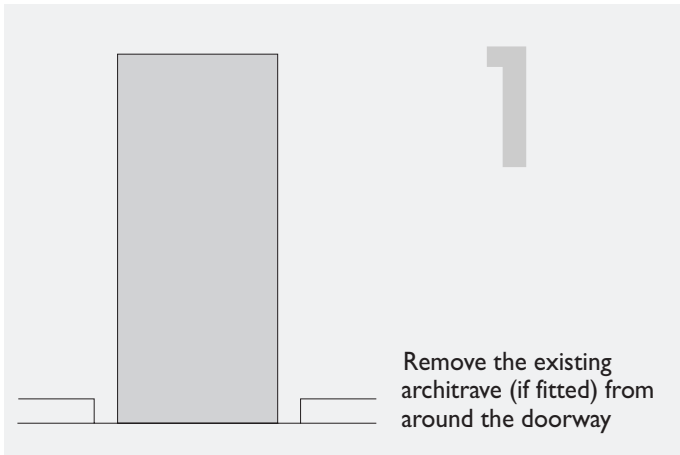
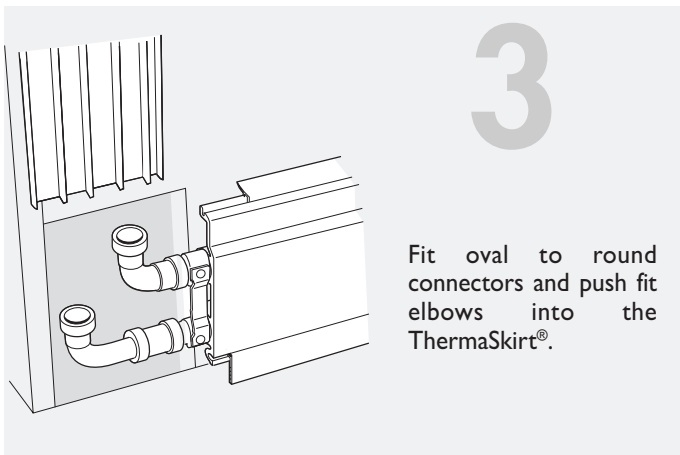


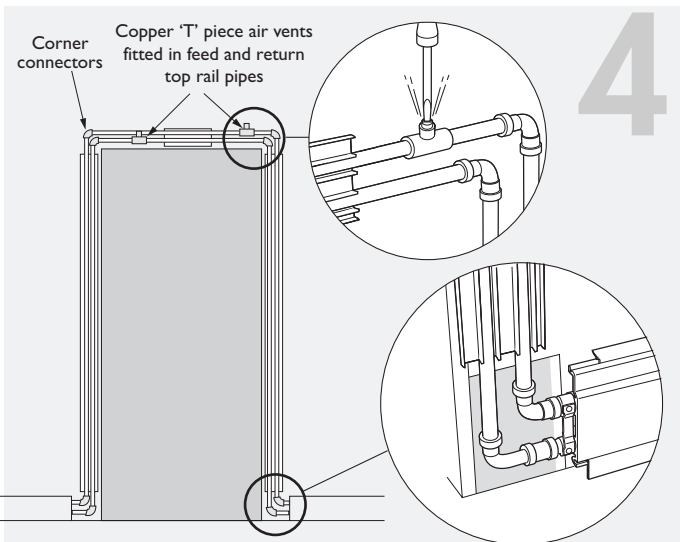
USE IN CONJUNCTION WITH YOUR MAIN THERMASKIRT® INSTALLATION INSTRUCTIONS



Remove the existing architrave (if fitted) from around the doorway



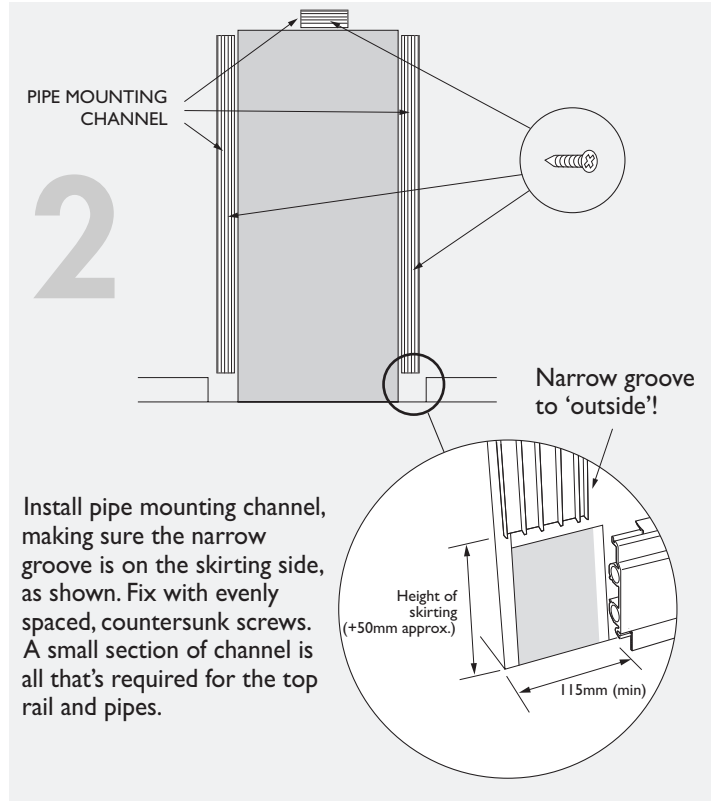
Fit oval to round connectors and push fit elbows into the ThermaSkirt®.



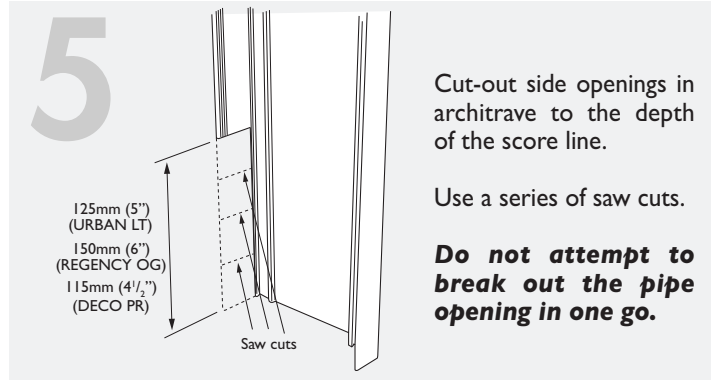
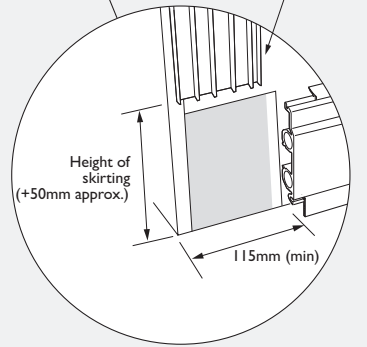
Push the barrier pipe into the mounting channel. Straight lengths of Pex barrier pipe are recommended (not supplied). Ensure the barrier pipes are cut to the correct length to provide at least 15mm to insert into each corner connector and 'T' piece.

When all the pipe connections have been made and the system completed, it should be filled and pressure tested.

The two 'T' piece air vents can be used to bleed any trapped air.



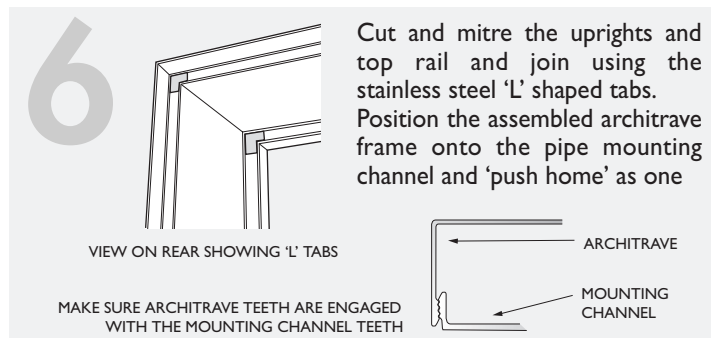
Install pipe mounting channel, making sure the narrow groove is on the skirting side, as shown. Fix with evenly spaced, countersunk screws. A small section of channel is all that's required for the top rail and pipes.



Cut-out side openings in architrave to the depth of the score line.

Use a series of saw cuts.

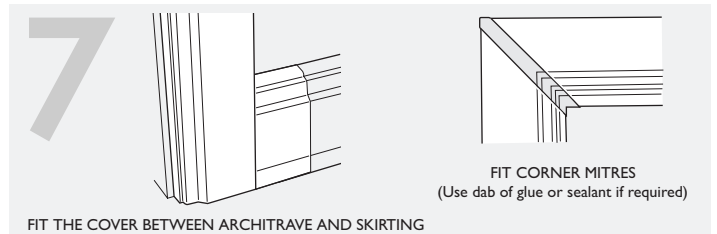
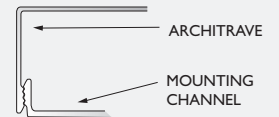
Do not attempt to break out the pipe opening in one go.



Cut and mitre the uprights and top rail and join using the stainless steel 'L' shaped tabs. Position the assembled architrave frame onto the pipe mounting channel and 'push home' as one

VIEW ON REAR SHOWING 'L' TABS

MAKE SURE ARCHITRAVE TEETH ARE ENGAGED WITH THE MOUNTING CHANNEL TEETH



FIT CORNER MITRES
(Use dab of glue or sealant if required)

FIT THE COVER BETWEEN ARCHITRAVE AND SKIRTING

If required the assembly can be caulked or sealed for a perfect finish